

# Sudbury Catholic District School Board Reopening plan September 2020

Updated September 14, 2020



## Table of Contents

<b>PREAMBLE</b>	5
<b>OVERALL GOALS:</b>	5
<b>KEY CONSIDERATIONS:</b>	5
<b>SCENARIO 1 – MODIFIED CONVENTIONAL - NORMAL SCHOOL DAY ROUTINE WITH ENHANCED PUBLIC HEALTH PROTOCOLS. NOTING THAT SOME DISTANCE LEARNING WILL BE REQUIRED FOR STUDENTS WHOSE PARENTS CHOSE NOT TO SEND THEM TO SCHOOL AT THIS TIME</b>	6
<b>A) SCHOOL SITE</b>	6
<i>Enhanced cleaning protocol</i>	6
<i>PPE: Including hand sanitizer, masks, goggles, visors, gloves, gowns</i>	7
<i>Signage</i>	8
<i>Common Spaces</i>	9
<i>Playgrounds and outdoor play structures</i>	9
<i>Front offices</i>	9
<i>Lockers and Cubbies</i>	9
<i>Classroom Setup</i>	9
<i>Kindergarten Classrooms</i>	10
<i>Student support</i>	10
<i>Isolation room/area</i>	10
<i>Joint Health and Safety Committee (JHSC)</i>	10
<b>B) SCHOOL OPERATIONS</b>	11
<i>School Day</i>	11
<i>Registration Process</i>	11
<i>Staggered Entry</i>	12
<i>Pivoting from face-to-face to remote learning</i>	12
<i>Recess and Lunch</i>	12
<i>Entry Requirements</i>	13
<i>Dismissal Requirements</i>	13
<i>Pick-up/Drop off</i>	13
<i>Visitors</i>	13
<i>Breakfast Club Elementary and Secondary</i>	13
<i>Social/Physical Distancing</i>	14
<i>Personal belongings in the school</i>	14
<i>Field Trips</i>	15
<i>Community use of Schools</i>	15
<i>Sports and other activities</i>	15
<i>Special Events</i>	15
<i>Childcare and before- and after-school programs</i>	15
<i>Fire Drills</i>	15
<i>Lockdown Drills</i>	16
<i>Contactless Payments</i>	16
<i>Governance and administration</i>	16
<i>Board administration</i>	16
<b>C) STAFF PREPARATION/CONSIDERATION/PROGRAMING</b>	16
<i>Assignment of support staff</i>	16

ECE.....	16
EAs.....	16
Resource Teacher.....	16
Refresher learning.....	16
EQAO Assessments.....	17
OLC.....	17
Student Tracking.....	17
Social Emotional Learning/Mental Health.....	17
Learning Materials.....	17
Science Labs.....	17
Music.....	18
Technology.....	18
Co-operative Education.....	18
Technological Education.....	19
Fitness Rooms and Equipment.....	19
Students with special Needs.....	19
Psychological Testing.....	20
Speech and Language Services.....	21
Staff accommodations.....	21
International Students.....	21
<b>D) ONGOING HEALTH/HYGIENE CONSIDERATIONS.....</b>	<b>21</b>
Bathroom, hand hygiene and respiratory etiquette.....	21
Physical Education classes.....	22
Staff screening and self-assessment.....	22
Student screening and self-assessment.....	22
Testing and contact tracing.....	23
Water Fountains.....	23
Doors.....	23
HVAC Systems.....	23
<b>E) COMMUNICATION.....</b>	<b>24</b>
Communication with parents.....	24
Communication with staff.....	24
<b>SCENARIO 2 - MODIFIED SCHOOL DAY ROUTINE BASED ON SMALLER CLASS SIZES (15), COHORTING AND ALTERNATIVE DAY OR WEEK DELIVERY.....</b>	<b>25</b>
<b>ADAPTED CURRICULUM DELIVERY.....</b>	<b>25</b>
<b>A) STAFF PREPARATION/CONSIDERATION/PROGRAMING.....</b>	<b>25</b>
“Cohorting” refers to minimizing the number of students and teachers any individual comes in contact with, and to maintaining consistency in those contacts as much as possible.....	25
Learn at home days.....	26
Assignment of support staff.....	26
ECE.....	26
EAs.....	26
Resource Teacher.....	26
Attendance Counsellors.....	26
SHSM, OYAP, COOP.....	27

<b>SCENARIO 3 - REMOTE LEARNING (PARENTAL CHOICE DURING SCHOOL-BASED MODEL OR DURING FULL SCHOOL CLOSURE)</b> .....	<b>27</b>
<b>PREAMBLE</b> .....	<b>27</b>
<b>THE 3 Cs</b> .....	<b>28</b>
<b>SYNCHRONOUS AND ASYNCHRONOUS LEARNING</b> .....	<b>29</b>
<b>PLATFORMS</b> .....	<b>33</b>
<b>TIMETABLING &amp; SCHEDULING</b> .....	<b>34</b>
<b>REFRESHER LEARNING</b> .....	<b>39</b>
<b>PLANNING (PREP) TIME TEACHER ROLES AND RESPONSIBILITIES</b> .....	<b>39</b>
<b>SUPPORT STAFF ROLES AND RESPONSIBILITIES</b> .....	<b>39</b>
<b>SPECIAL EDUCATION</b> .....	<b>40</b>
<b>ASSESSMENT, EVALUATION AND REPORTING</b> .....	<b>40</b>
<b>EXPERIENTIAL LEARNING</b> .....	<b>42</b>
<b>PARENTAL ENGAGEMENT AND COMMUNICATION</b> .....	<b>42</b>
<b>REFERENCES</b> .....	<b>43</b>
<b>APPENDICES</b> .....	<b>44</b>



## **PREAMBLE**

The operations/processes outlined in this document are based on the most recent advice from Public Health officials and the Ministry of Education. Our plans for a Return to School must remain flexible and adaptable while maintaining our focus on the health, safety and wellness of students and staff. The plan includes details for three (3) possible scenarios:

- 1. Scenario 1 – Modified Conventional - Normal school day routine with enhanced public health protocols. Noting that some distance learning will be required for students whose parents chose not to send them to school at this time.**
- 2. Scenario 2 – Modified school day routine based on smaller class sizes (15), cohorting and alternative day or week delivery.**
- 3. Scenario 3 – At-home learning with ongoing enhanced remote delivery.**

On July 30, the Ministry of Education advised that we would be adopting a modified conventional return to school (scenario 1) for September of 2020. It is important to note that the Ministry could direct schools to return to in-person instruction with limits on the number of students in each class and the number of students in the school at the same time and/or a move to full online remote learning. This plan presents details for all three possible scenarios.

*The information contained in this plan is subject to change at any time based on the guidance provided by the Ministry of Education and/or from the guidance provided by local or provincial Public Health department staff.*

## **Overall Goals:**

1. Provide for the health, safety and well-being of students and staff.
2. Balance the risk of direct infection and transmission of COVID-19 in children with the impact of school closures on their physical and mental health.
3. To minimize the amount of disruption to schools given the need for children to have familiar routines. Try to achieve as close to normal as possible.
4. To minimize the learning gap in all areas of the curriculum.
5. Clear and consistent communication with all parties.
6. A commitment to doing everything we can to support students' learning, growth and development.

## **Key Considerations:**

1. To ensure students and families are supported and respected in making decisions that work best for them, in-person school attendance will be optional for the 2020/21 school year. If not attending in-person, students will be expected to attend school remotely. This requirement will be in place for as long as public health circumstances require adapted delivery of education. Remote learning options will be available for all students on a full-time distant/remote learning basis with access to learning materials posted online to support both synchronous and asynchronous learning opportunities during the day.
  - For students who are engaged in remote learning, attendance should be taken according to the school's daily protocol.
  - Students should be provided with a daily schedule of subjects/courses according to a 5-hour instructional day with opportunities for frequent, live contact with a teacher and expectations for synchronous learning. It is expected that learning will be based on overall expectations across all subjects/courses and grades.
  - If parents chose online learning for their child, re-entry into the school for face-to-face learning are as follows: Secondary at the start of each quadmester; for elementary after November 16 (mid-term) and after the Christmas break.
  - For secondary students, online courses delivered through a fully independent learning model are also available through the TVO Independent Learning Centre (ILC); over 140 courses are available in both English and French. School boards are required to approve student enrolment in ILC courses. All reasonable requests by students for independent

study will be supported and students should be able to access guidance counsellors to confirm that credits support their academic pathway.

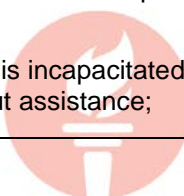
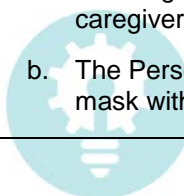
**Scenario 1 – Modified Conventional - Normal school day routine with enhanced public health protocols. Noting that some distance learning will be required for students whose parents chose not to send them to school at this time.**

#### A) SCHOOL SITE

Key Element	Board Action
Enhanced cleaning protocol	<p>We will be using the pandemic cleaning protocol as a base and have fine-tuned to include increased frequency of cleaning in areas such as high touch points in hallways and washrooms and main office areas (2x daily), touch areas 2x daily (door handles, light switches, railings, toilet and faucet handles, sinks, pencil sharpeners).</p> <p>Custodial staff will collect garbage (to be placed in the hallway) after lunch and staff/students will disinfect classroom where necessary using either wipes or spray.</p> <p>Staff/students will be supplied with either “spray and leave on” product or wipes and gloves. Note: as elementary students will not share workspaces, cleaning during the day in the classroom is not as critical. Classroom cleaning should focus on frequently touched surfaces such as door handles and light switches. Student desks, chairs, and tables should be cleaned between cohort changes where possible. At the secondary level, students entering the classroom at period 2 will be asked to clean their desk and chair area upon entry.</p> <p>We will follow the cleaning products’ manufacturer’s instructions with respect to the use of PPE.</p> <p>Post the MSDS sheet for any product used in the classroom.</p> <p>Water fountains will be turned off (flushing schedule will be developed to ensure safety is maintained) – water bottle filling stations will be available in all schools. Students and staff will be asked to bring a reusable container.</p> <p>Note: All carpets and fabric/cloth items such as plush toys will be removed until further notice.</p>



<p>PPE: Including hand sanitizer, masks, goggles, visors, gloves, gowns</p>	<p>Medical mask and face shield or goggles must be worn if physical distancing cannot be maintained AND others around you are not wearing mask (cloth or otherwise).</p> <p>Two medical masks and eye protection (i.e. face shield) will be provided for all teachers and other staff. All school-based staff will be required to wear masks, with reasonable exceptions for medical conditions.</p> <p>Hand sanitizer will be available at main entrances and in classrooms.</p> <p>Goggles or shields and/or face masks will be provided and gowns (where required) to staff who must work very closely with students i.e. educational assistants, early childhood educators, kindergarten teachers.</p> <p>All staff are to ensure their personal protective equipment is clean.</p> <p>All staff to adhere to physical distancing guidelines where possible, move desks, equipment as required or place an X to indicate not in use.</p> <p>Disposable gloves will be provided if necessary, for staff to deal with bodily fluids.</p> <p>Provide training on the proper use of PPE during the September PA Days, prior to student return. Students will be trained at the onset of the school year.</p> <p>Non-medical face coverings for students grades 4 to 8 is mandatory indoors including in hallways and classrooms where social distancing is not possible. Students in grade 3 that are in a grade 3/4 split will also be required to wear a face covering. Non-medical masks for students JK to Grade 3 will be highly encouraged. Children will be trained on how to put on and remove their face covering. Outdoor times like recess can be used as opportunities to provide students with breaks from wearing masks within their cohorts. Reasonable exceptions on the requirement to wear masks will apply. All schools will be provided with cloth masks for students should they forget theirs or need a replacement (Appendix A – <i>Wearing a mask or face covering</i>).</p> <p>As per the Public Health Guidelines, a person can be exempt from wearing a Face Covering on the premises if:</p> <ol style="list-style-type: none"> <li>The Person is a child under the age of two years; or a child under the age of 5 years either chronologically or developmentally and he or she refuses to wear a face covering and cannot be persuaded to do so by their caregiver;</li> <li>The Person is incapacitated and unable to remove their mask without assistance;</li> </ol>
---	--



	<ul style="list-style-type: none"> <li>c. Wearing a Face Covering would inhibit the Person's ability to breathe in any way;</li> <li>d. For any other medical reason, the Person cannot safely wear a Face Covering such as, but not limited to, respiratory disease, cognitive difficulties or difficulties in hearing or processing information;</li> <li>e. For any religious reason, the Person cannot wear a face covering, or cannot cover the face in a manner that would properly control source.</li> </ul> <p>Parents requiring exemptions are to contact their principal as soon as possible and parents must complete the mask exemption form (Appendix B). Principals should work with their superintendent if a mask exemption is received.</p> <p>Staff in school and office settings, in custodial and maintenance roles should maintain physical distancing. In performing job duties where physical distancing is not possible, face covering must be worn.</p> <p>Essential visitors are required to wear a mask and would be responsible for supplying, safe use and cleanliness of the mask and proper disposal.</p> <p>Paraprofessional are to follow professional college guidelines for all assessments/student contact.</p>
Signage	<p>Signage on walls and floors will help students maintain a 1 to 2 metre distance from one another where possible. The signage will be posted at entrances to classrooms, school entrances and exits, large spaces such as the learning commons, and meeting spaces such as the main office, principal or vice-principal offices, outside elevators, and in the resource room.</p> <p>Tape will be used in the middle of hallway to separate 'lanes' and staff monitoring will be required. This will ensure one-way traffic flow on each side of the hallway.</p> <p>Signage on proper handwashing as well other protocols will be posted in each classroom and throughout the school.</p> <p>Signs will be posted at entrances to the school to remind students, staff, parents/caregivers, and essential visitors of screening requirements.</p> <p>Signage will include the following:</p> <ul style="list-style-type: none"> <li>- Visitor Signs</li> <li>- Enter Only Signs</li> <li>- Exit Only Signs</li> <li>- Directional Arrow Signs</li> <li>- Safe Distance Sign</li> <li>- No gathering Signs</li> <li>- No congregating in the corridors Signs</li> </ul>




	<ul style="list-style-type: none"> <li>- Hallway signs for directing traffic</li> <li>- Drinking Fountain Signs</li> <li>- Elevator Signs</li> <li>- Mandatory Masks Signs</li> <li>- Hand Washing Signs</li> <li>- Fact Sheet: Handwashing</li> <li>- Fact Sheet: Wearing a Mask</li> <li>- Fact Sheet: Know the symptoms</li> </ul>
Common Spaces	<p>If the large space is not being utilized as a classroom space, one cohort per day in learning hub or other large gathering spaces will be permitted and then disinfectant cleaning in the evening.</p> <p>Gym – classes throughout the day to use different equipment if disinfecting throughout the day is not feasible – use and cleaning schedule to be developed under the leadership of the principal.</p> <p>Educator workrooms should be reconfigured, including scheduling to allow for physical distancing. Students will not be permitted in any staff common areas other than classrooms.</p>
Playgrounds and outdoor play structures	<p>Outdoor structures will remain closed at the present time. Signs will remain posted and equipment will be taped off (disinfection between uses is not feasible given staff requirements), with the exception of basketball courts and other equipment that permits play while minimizing risk. Recess may need to be staggered based on the size of the outdoor space and the availability of supervisors. Outdoor areas should be designated for each cohort to minimize contact with other students from outside the instructional cohort. Principals will develop a schedule and routine that allows for students to maintain appropriate physical distancing while still having an opportunity for fresh air and physical activity.</p>
Front offices	<p>Portable ‘sneeze guards’ will be installed. These will also be available to staff who work one on one with students where social distancing cannot be maintained.</p>
Lockers and Cubbies	<p>Students will not have access to lockers or cubbies during COVID-19, so that all materials will stay with them in the classroom. All bags, shoes, boots, coats, etc. will remain at the student’s personal space in each classroom. This will be revisited as the winter months approach.</p>
Classroom Setup	<p>Students will remain in the same consistent seat in the class as much as possible. In the event that rotary is required or in the delivery of prep time, the teacher will move, and the students will remain in their classroom. The student desk/table becomes their personal space and should be as far away from the nearest student as practical. Where possible, the same students should remain with the same teacher. Physical barriers such as unused desks, or visual markings, can be used to assist with the separation. Extra desks or tables can be placed to the side or an X using masking tape to be placed on the surface indicating that it is not in use or removed from the classroom.</p>



	<p>Classrooms vary in size, but schools are encouraged to remove unnecessary furniture where possible and place desks with as much distancing as possible, and to allow teachers as much teaching space as possible. Desks should face forward rather than in circles or groupings. In some cases sneeze guards might be required.</p> <p>Schools are encouraged to locate larger classes in larger spaces and to use all available space in a school, including gyms and libraries.</p>
Kindergarten Classrooms	<p>While social distancing may not be as practical for four and five-year-olds, the rule of no physical touching should be reinforced. Activities will be designed for small groups, and furniture and play areas should be used to help maintain physical separation. Plush toys will be temporarily stored during the pandemic. Toys and manipulatives will be reduced where possible while still providing for students a wide variety of play-based learning.</p> <p>If sensory materials (e.g., playdough, water, sand etc.) are offered, they should be provided for single use (i.e. available to the child for the day) and labelled with child's name, if applicable. Please refer to Guidelines for Kindergarten for further information (Appendix C).</p>
Student support	<p>Students will be able to leave their classrooms to receive additional supports but direct and indirect contacts in schools for any one student should be limited to approximately 50 in the elementary level and 100 at the secondary level (excluding adults, bus, before and after school programs).</p>
Isolation room/area	<p>Each school will designate an isolation room/area. This room/area will be used for the temporary placement of any student that becomes ill during the day. An isolation kit containing staff/student PPE for illnesses, will be provided to each school containing: hand sanitizer, disposable gloves, mask, eye protection and a gown. Instructions on the proper use of the PPE will be included in the kit. The student must be supervised by a designated staff member.</p> <p>The room/area will be cleaned before use by another student.</p>
	<p>Remove all items that cannot be cleaned (paper, books, etc.) and store them in a sealed container for a minimum of 7 days.</p>
Joint Health and Safety Committee (JHSC)	<p>The JHSC has been consulted/apprised on the Health and Safety procedures. Resources from the Ministry of Labour – Resources to prevent COVID-19 in the workplace will guide our work.</p>



## B) SCHOOL OPERATIONS

Key Element	Board Action									
School Day	<p><b>Bell Times</b></p> <ul style="list-style-type: none"><li>- Elementary and secondary students Kindergarten to Grade 12 will attend school five days per week, with 300 minutes of instruction per day.</li><li>- Entry and exit plans into schools will be established prior to school opening and will be communicated to parents. Schools will design based on the number of doors available to enter the school, the bus schedule etc. keeping in mind the need to keep cohorts together throughout the day.</li><li>- Stagger the entry and exit times of classes based on transportation requirements.</li><li>- Pick up and drop off of students will happen outside of the school in a designated area. Exit times will be staggered to minimize contact/gathering.</li><li>- <b>Elementary day</b> will remain status quo with adjustments to start and end times as per busing schedule. Cohorted classes will stay together and with one teacher, where possible. Students can expect to see changes in the timing of recesses, lunches, and bathroom breaks as they are staggered to support cohorting. Specialized teachers, like French, NSL, music and other specialized teachers, will still be able to go into classrooms to provide the full breadth of programming for students. Specialized teachers will adhere to all health and safety measures.</li><li>- <b>Secondary Timetable</b> will promote fewer contacts and allow for contact tracing if required. Limit indirect and direct student contacts to approximately 100 students in the school; and keep secondary school students in a maximum of two in-person class cohorts.</li><li>- To achieve this, the quadmester system will be adopted.<ul style="list-style-type: none"><li>• 2 x 150-minute periods per day</li><li>• 1 x 40-minute lunch</li><li>• Staggered class changes (10 minutes)</li><li>• Analysis of classes over 30 has already begun. Where classes exceed 30, they will be placed in larger classrooms.</li></ul></li></ul> <table><tr><td>Quadmester 1 – Periods 1 and 2</td><td>September 8 to November 10</td><td>Exams for periods 1 and 2 November 11 and 12</td></tr><tr><td>Quadmester 2 – Periods 3 and 4</td><td>November 13 to February 2, 2021</td><td>Exams for periods 3 and 4, February 3 &amp; 4, 2021</td></tr><tr><td>Second Semester</td><td>Begins on February 8, 2021</td><td></td></tr></table>	Quadmester 1 – Periods 1 and 2	September 8 to November 10	Exams for periods 1 and 2 November 11 and 12	Quadmester 2 – Periods 3 and 4	November 13 to February 2, 2021	Exams for periods 3 and 4, February 3 & 4, 2021	Second Semester	Begins on February 8, 2021	
Quadmester 1 – Periods 1 and 2	September 8 to November 10	Exams for periods 1 and 2 November 11 and 12								
Quadmester 2 – Periods 3 and 4	November 13 to February 2, 2021	Exams for periods 3 and 4, February 3 & 4, 2021								
Second Semester	Begins on February 8, 2021									
Registration Process	<div></div> <p>We have been promoting registration throughout the summer and targeted the week of August 10 to 14 for registration. Our registration is an automated-online process. Principals have been in their schools starting the week of Aug. 24 to further assist. Parents/guardians will be advised that registrations received after August 28<sup>th</sup> may not be able to be accommodated for September 8<sup>th</sup> and their entry might be</p>									

	<p>delayed. This will depend on the class makeup and busing requirements.</p> <p>A survey is being completed to ascertain which parents are opting for online remote learning in September. The survey also asks what concerns/questions they might have to assist us in planning for re-entry.</p>
Staggered Entry	<p><b><u>Elementary Schools (K to 6, K to 8):</u></b></p> <p>Tuesday, September 8: Grade 6, 7 &amp; 8</p> <p>Wednesday, September 9: Grade 4 &amp; 5</p> <p>Thursday, September 10: SK (FDK 2), Grade 2 &amp; 3</p> <p>Friday, September 11: JK (FDK 1) &amp; Grade 1</p> <p><b><u>St. Benedict C.S.S., St. Charles College, Marymount Academy, and Bishop Alexander Carter C.S.S</u></b></p> <p>Tuesday, September 8: Grade 7</p> <p>Wednesday, September 9: Grade 8</p> <p>Thursday, September 10: Grade 9</p> <p>Friday, September 11: Grade 10</p> <p>Monday, September 14: Grade 11</p> <p>Tuesday, September 15: Grade 12</p> <p><b><u>Online Learning</u></b></p> <p>All online learning will begin on Monday, September 14<sup>th</sup>.</p>
Pivoting from face-to-face to remote learning	<p>Pivoting from one modality to the other will be restricted to key periods such as after mid-term, after Christmas and after March Break for the elementary panel. At the secondary level pivoting will take place after each quadmester. All individual requests will be reviewed and all exceptional circumstances will be considered. It is important to note that the movement from one learning modality to the other may need to be delayed in certain situations due to the impact it may have on staffing.</p>
Recess and Lunch	<p>Schedule staggered recess breaks in small groups and at different times during the day, use the outdoor space to spread students out with designated play areas. Cohorts (classes) must remain together throughout the day.</p> <p>Student lunches will take place in the classroom. At the secondary level, a small number of students might be assigned to the cafeteria provided that social distancing and cohorting can be maintained.</p> <p>Staff lunchroom should ensure physical distancing, encourage staff to eat in their classroom or other common areas where possible.</p> <p>Where possible students should eat in their classroom.</p>

	<p>Students should not be sharing food or money.</p> <p>Staggered entry and exit into the cafeteria to ensure distancing.</p> <p>Students are to sanitize hands upon entering the cafeteria.</p> <p>Washroom breaks will need to be monitored.</p> <p>Microwaves will be closed until further notice.</p> <p>Students are to dispose of their own garbage.</p> <p>Third party food services, including nutrition programs, will be delivered in a way that any student who wishes to participate can do so. "Grab and Go format" is preferred. All surfaces, bins and containers for food should be disinfected prior to and after each use.</p> <p>Special food days may continue with strict health and safety measures as it relates to good food handling practices.</p> <p><b>Lunchroom Supervisors</b> Lunchroom supervisors should not enter the office unless necessary.</p> <p>Lunchroom supervisors must wear masks and shields if they are unable to physically distance by 2m.</p> <p>Personal items need be stored in a dedicated area.</p>
Entry Requirements	School entry times may be staggered, and multiple entry doors may be used to allow for physical distancing. Students will be required to sanitize their hands as they enter the school/classroom. Buses should only drop off one group of students at a time.
Dismissal Requirements	School dismissal times may be staggered, and multiple exit doors will be used to allow for physical distancing to occur.
Pick-up/Drop off	Pick-up/Drop-off - Visitors, volunteers, and parents will not be permitted in the school during the pandemic. Parents may not enter the school with the exception of a Principal/Vice-Principal or designate approved appointment or to pick up their child. Pick up and drop off will be coordinated through the principal to minimize the number of people in one area at one time. Examples include dismissing a class at a time or assigning various exits/entrances to different classes.
Visitors	<p>In the upcoming school year, schools will significantly limit or even prohibit visitors, including parents from entering the school.</p> <p>Visits to ensure school safety, such as inspections by the Fire Marshal's office or by public health, will continue to take place.</p> <p>Any visitors to a school will be required to sign-in, including contact information, self-screen and to wear a medical mask while on school premises.</p>
Breakfast Club Elementary and Secondary	All items must be prepacked and/or packaged.

	Breakfast club room will not be open, “grab and go” items will be available to be picked up or delivered to the classroom. For example, foil wrapped bagels, individually wrapped granola bars are compliant.
Social/Physical Distancing	<p>As much distancing as possible between students, between students and staff and between staff members should always be promoted. Physical distancing measures are to be supplemented with other public health measures supported by health and safety strategies, such as screening, adapted school environment, cohorting, hand hygiene, enhanced cleaning and masking.</p> <p>Reorganize the movement in the school to ensure physical distancing (use tape on the floor with directional arrows).</p> <p>Use different school entrances for students to enter and exit the school.</p> <p>Stagger the entry and exit of classes based on transportation requirements.</p> <p>Schedule recess in small groups and at different times during the day, use the outdoor space to spread students out with designated play areas.</p> <p>Limit parents and visitors and indicate such in letter to parents.</p> <p>Limit the gym, library, learning commons to one class at a time and to ensure physical distancing within the space.</p> <p>Pick up and drop off of students will happen outside of the school.</p> <p>Large gathering and assemblies are cancelled.</p> <p>Limit community partners in school where possible if not, ensure all protocols are followed.</p> <p>Assign staff to dedicated work areas as much as possible, discourage staff from sharing phones, desks, office and other tools and equipment.</p> <p>Students will minimize the personal belongings and keep all belongings at their designated desk or table space. It is good practice to bring only what is essential.</p> <p>No food sharing, each student will have their individual lunch/snack.</p> <p>Hand hygiene must always be maintained.</p>
Personal belongings in the school	<p>Minimize the number of personal belongings at school (e.g., backpack, clothing, sunscreen, etc.) and, if brought, asking that belongings be labeled and kept in the child’s designated area.</p> <p>Students are asked to bring a refillable bottle to school for the water filling station. All water fountains will be turned off.</p> <p>Ensure each student has their own individual meal or snack with no common food items.</p>



Field Trips	<p>School staff will only plan virtual field trip experiences until the province has indicated that larger gatherings can take place.</p> <p>Field trips in outside spaces may be permitted.</p>
Community use of Schools	Canceled at this time.
Sports and other activities	<p>Students will wash their hands before and after any outdoor or sports related activities.</p> <p>Outdoor activities are encouraged.</p> <p>Hand washing time must be built into schedule (Phys Ed, Class rotation).</p> <p>Various classes throughout the day to use different assigned equipment as disinfecting between classes is not feasible – use and cleaning schedule to be developed under the leadership of the principal.</p> <p>Individual sports/activities may continue with proper hygiene and physical distancing in place, as long as this does not impact cohorts that have been put in place as a health and safety measure. OFSAA has announced that it has cancelled all championships and festivals for the fall season. Local sports will resume when it is safe to do so.</p> <p>Please refer to the Ontario Physical and Health Education Association website for additional information: <a href="https://www.ophea.net/">https://www.ophea.net/</a></p>
Special Events	<p>All large gatherings are cancelled until further notice.</p> <p>Reschedule or restage special events where possible either in-person or through online options.</p> <p>Continue monthly prayer services virtually – shared with each class – live stream /ZOOM.</p> <p>Virtual assemblies can also continue through live streaming tools.</p>
Childcare and before- and after-school programs	Ensure child-care provider is offering before and after school programming and is adhering to physical distancing, hygiene and cleaning protocols. They have their guidelines to follow.
Fire Drills	<p>Practice drills will continue. In collaboration with the Office of the Fire Marshal and the Ministry of Education a new directive was supplied to school boards and schools in compliance with Fire Code requirements and aligned with public health advice related to the COVID-19 pandemic (Appendix D). Smaller groups of classes will move throughout the building while maintaining physical distancing between classes in the hallway and at all exits. Each Principal will review with staff where to go in case there is a real emergency, and the school needs to be evacuated. Locations on the school playground or field should be identified that would allow for a distance between students to be maintained and where cohorts can be kept apart from one another.</p>

Lockdown Drills	Physical lockdown drills will not take place during COVID-19. A drill will take place that reviews the procedures in the case of a real life-threatening situation. The modified practice drill must adhere to physical distance requirements.
Contactless Payments	To reduce the handling of cash, schools will be required to promote the use of Cash online.
Governance and administration	School board meetings will continue to be convened in person if social distancing can be adhered to. As entry into the building is restricted, the public will be able to attend the meeting virtually.
Board administration	Office Space allocation: Offices that are shared i.e.: Attendance, Autism, ELL, Indigenous Education will be occupied by one person. Other staff will be assigned to Schools or reassigned to a different area of the CEC.

### C) STAFF PREPARATION/CONSIDERATION/PROGRAMING

Key Element	Board Action
Assignment of support staff ECE EAs Resource Teacher	<p>ECEs will work collaboratively with their teacher partner to deliver the kindergarten program, maintaining physical distancing and hygiene protocols.</p> <p>Support Staff should be organized where possible, in such a way as to limit the number of classes that they work in over the course of the day. For instance, one EA for primary and one for junior classes.</p> <p>Support staff are to provide regular check-ins with students whose families have chosen for them not to attend in person.</p>
Refresher learning	<p>Beginning in September, students will be supported in transitioning to their next grade or course, acknowledging the prolonged absence of students from the classroom. Part of this support should include assessments to identify students' strengths and gaps in learning at key instructional times to ensure students have fundamental building blocks in advance of new content. The primary purpose of instruction and assessment is to raise the skill level of all learners in their achievement of overall curriculum expectations across all subjects, courses, and grades.</p> <p>Educators should ensure that they provide review of the previous year's expectations to determine level of knowledge and skills.</p> <p>In accordance with Growing Success (2010), educators should ensure that they conduct diagnostic assessments to determine students' knowledge and skills and to guide their instruction.</p> <p>Special Education Resource Teacher (SERT) is to ensure to support teachers in their role and to adjust the IEP as required.</p> <p>Enhance Tutoring programs where possible.</p>



EQAO Assessments	The Ministry of Education has determined that all elementary EQAO assessments ( Gr 3 & 6 ) will be suspended this school year and only the Grade 9 Mathematics and the Grade 10 OSSLT assessments will be required. Students participating in the Grade 9 Mathematics Assessment will have the opportunity to complete the assessment at the end of the quadmester in which they are taking their math course. The test will be completed online over the course of two days. Information regarding the OSSLT will be made available early in the school year.
OLC	Schools should offer OLC first semester where possible. For those students graduating before February 2021 who have not yet met the literacy graduation requirement, they should be enrolled in the Ontario Secondary School Literacy Course (OSSLC) or an adjudication process.
Student Tracking	All schools should have a system in place to track students at risk: At risk students to be identified prior to September start where possible; students closely monitored; with weekly check ins and additional support to be in place for students (guidance, EA etc.). Connection with students early in September is essential.
Social Emotional Learning/Mental Health	School Mental Health Ontario has provided school boards with a professional learning framework and toolkit to support the mental health of all students that can be tailored at the board and school level for different audiences. The professional learning will have a strong focus on building students' social-emotional learning skills so that they can build resilience, manage their stress and build positive relationships. <a href="https://smho-smso.ca">https://smho-smso.ca</a>
	Professional learning will be provided for system leaders, educators and mental health professionals to support the approach to school re-entry, as well as throughout the school year.  We will continue to implement a tiered approach for mental health supports that will capture all students and target intensive help to those who have been most affected by the COVID-19 outbreak.
Learning Materials	Students should have their own supplies and textbooks as they should not share supplies where possible (things to consider- calculators, rulers, glue, scissors, pencil crayons- these are all supplies that students normally borrow during the day). Schools will likely need to order additional supplies.
Science Labs	Protective equipment in the lab (protective eyewear/goggles and aprons) will need to be appropriately disinfected prior to use. Ideally additional eye protection should be purchased and assigned to the dedicated use of one student for the duration of the semester where possible.  Lab groups should be defined for the duration of the class so that contact tracing is easier should anyone become infected. Lab groups/groups for small group activities should be very small. Continued use of virtual labs if appropriate /available.

	<p>Consider staggering labs to allow for only 1 or 2 persons per lab activity.</p> <p>Gloves should be required for all labs (not just those with corrosive agents) to help mitigate contact transmission through shared touch of lab items.</p> <p>Lab protocols may need to be redesigned to given specific roles (i.e. person # 1 does this, person # 2 does this etc.) to avoid items being touched by more than one student.</p> <p>Enhanced hand hygiene and mandatory wearing of masks for teachers/staff prior to setting up labs to avoid surface contamination (including common chemicals in chemical storage area, glassware etc.).</p> <p>Immediate clean-up of all lab supplies with appropriate attention to disinfection and cleaning (again contact time and disinfectant choice are important considerations).</p> <p>Disinfection of lab surfaces and prep surfaces (back prep room counters, sink, faucet/taps) pre and post labs.</p> <p>Face coverings are required for all small group lab activities given that respecting the distance requirement might be impossible.</p>
	<p>Shared use items (i.e. graphing calculators in math, organic model kits, spring scales) would need to be disinfected between uses. Ordering additional supplies will not be required IF they can be appropriately disinfected as per public health recommendations.</p> <p>Enhanced hand hygiene prior to and at the end of all labs or hands on activities.</p>
Music	<p>Students cannot share instruments without being cleaned between uses. Wind, percussion and string instruments all pose a health and safety challenge for the grade 7/8 program. Therefore, the use of instruments for grade 7/8 music is cancelled at this time and may be revisited at a later date. Music teachers will go into classrooms to provide music instruction that is based on the expectations of the music curriculum without the use of instruments.</p> <p>Secondary (grades 9 – 12) school music programs can take place using strict health and safety guidelines.</p> <p>Please refer to the Ontario Music Educators' Association for up to date information of music instruction: <a href="https://www.omea.on.ca/">https://www.omea.on.ca/</a></p>
Technology	<p>Classes have carts that they share amongst pods (3-4 classes). BYD (Bring Your Own Device) will be encouraged. Wipes/cleaning products will be provided for technology between users.</p>
Co-operative Education	<p>Co-op placements should be offered virtually, where feasible. In-person community placements can be arranged in alignment with the direction and recommendations of the local health unit, and with</p>

	<p>the safety and curriculum requirements of the Cooperative Education curriculum.</p> <p>Cooperative education is a key component of Specialist High Skills Majors, the Ontario Youth Apprenticeship Program and Dual Credit Programs.</p> <p>Please refer to the Edge Factor website for information on how we will be supporting our Cooperative Education and SHSM students digitally: <a href="https://edgefactor.com/k-12-browse">https://edgefactor.com/k-12-browse</a></p>
Technological Education	<p>A variety of delivery options may be considered to meet technological education curriculum expectations, which could include fully distanced learning, in-school instruction with lower-risk face to face learning opportunities in technological education classes. Technological education classroom cohorts must be designed to meet all physical distancing practices as well as health and safety precautions.</p> <p>Refer to the Ontario Council for Technology Education's website for suggestions on teaching technological education in line with current public health recommendations and in virtual environments. <a href="https://www.octe.ca/en">https://www.octe.ca/en</a></p>
Fitness Rooms and Equipment	<p>Physical fitness has been shown to have a positive impact on well-being, both physical and mental. Schools that wish to allow the use of their facilities must ensure that proper cleaning procedures and distancing protocols are in place. Weight rooms and equipment will be off limits for all staff and students. However, staff/students may use the designated spaces for fitness purposes if they maintain proper physical distancing from others that may be in the room simultaneously. If face-coverings are not worn a 2-meter social distance must be observed.</p> <p>Please refer to the Ontario Physical and Health Education Association website for additional information: <a href="https://www.ophea.net/">https://www.ophea.net/</a></p>
Students with special Needs	<p>Connect with Community agencies and implement a shared plan of care of students and families.</p> <p>Outside Professionals will follow a protocol for in class support and pull out: OT, PT, SLP, CCR.</p> <p>Superintendent to coordinate services to provide consistent communication and ongoing delivery of services.</p> <p>All EAs will be assigned to specific classrooms (limit sharing between classrooms where possible).</p> <p>All Itinerant Support Workers will be assigned to schools.</p> <p>Violent Threat Risk Assessments (VTRA) will continue virtually at this time.</p>



	<p>Autism team will continue to support students and families with behavioral tools such as visual schedules, reinforcement programs, social stories etc.</p> <p>Special Education Consultant and Mental Health Lead to:</p> <p>Offer Resource Teacher Meetings online.</p> <p>Weekly check in with staff in specialized classrooms for ongoing support and solving issues.</p> <p>Continue with the student of concern model and attend in school meetings, VTRAs through Zoom if social distancing is not possible.</p> <p>Ensure BMS training for EAs has a focus on health and safety. Organize ongoing training for staff regarding changes and evidence-based practices.</p> <p>Special Education Consultant and Principal to monitor needs of students requiring significant support (because of equipment, distancing may be difficult, planning is key).</p> <p>Resource teachers to monitor use of SEA Equipment.</p> <p>Students who are medically fragile or have severe health concerns will need an individualized plan which will need to be monitored and revised as needed. Work with parents prior to entry.</p> <p>Review IEP and all supports needed to ensure safety and proper protocols.</p> <p>Schedule parent meeting with school personnel and community agencies.</p> <p>New students will require a review of supports and procedures.</p> <p>Pool therapy is cancelled at this time.</p>
Psychological Testing	<p>Prepare to expedite and prioritize necessary psychological assessments to address emergent and existing needs. Follow up with parents.</p> <p>Provide direct feedback of assessment results with communication of diagnoses as appropriate to parents, students, schools and community services for programming recommendations and access to service. Continue with Zoom.</p> <p>Board wide screening with Wechsler Fundamentals: Academic Skills assessment (WF:AS) for grade 7 may need to either be deferred or be split into smaller groups.</p> <p>For testing students: face masks and face shields will be needed. Shorter testing sessions are recommended (2 hours or less) to be completed in a designated room.</p>

	Additional cleaning and disinfecting measures need to be in place following each appointment.
Speech and Language Services	<p>Continue to prioritize speech and language assessments and services. Space to accommodate physical distancing while assessing and treating students.</p> <p>Q-interactive platform with second iPad for each SLP. Face shields will be required.</p> <p>Consultations with SERTS, teachers and parents and report sharing can be completed over Zoom If social distancing is not possible.</p>
Staff accommodations	If possible and appropriate, teachers with medical conditions preventing them from regular class instruction will be assigned to daily online instruction and check-ins with students.
International Students	<p>All international students returning to Canada from another country must self-isolate for 14 days before being allowed to attend SCDSB schools.</p> <p>Pre-Arrival course and documents will review the protocol for school attendance as well as home stay.</p> <p>A copy of the return to school protocol for International Students is being sent out to all returning and new International Students. A copy of the document will reside on the board website.</p>

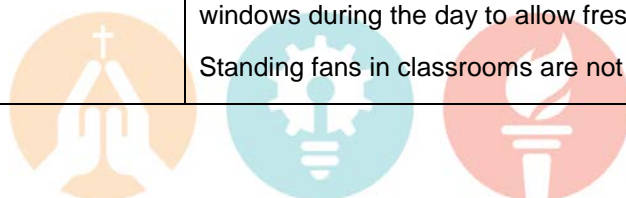
#### D) ONGOING HEALTH/HYGIENE CONSIDERATIONS

Key Element	Board Action
Bathroom, hand hygiene and respiratory etiquette	<p>Hand sanitizer will be made available to anyone entering the building and will be placed inside each classroom for student and staff use. Where sinks are available soap and paper towels will be provided.</p> <p>Age appropriate hand washing posters will be posted at every sink and around the school.</p> <p>Hand washing will take place often during the day and will be scheduled by the teacher and coordinated at the school level so that not everyone is in the bathroom at the same time. No more than one student per class at one time in the washroom. Staff to create a tracking system.</p> <p>Proper hand washing techniques will be taught to all students. This will take place at the start of school and refreshers to be provided as needed See Public Health Ontario's How to Wash Your Hands PDF:  <a href="https://www.publichealthontario.ca/-/media/documents/ncov/factsheet/factsheet-covid-19-hand-hygiene.pdf?la=en">https://www.publichealthontario.ca/-/media/documents/ncov/factsheet/factsheet-covid-19-hand-hygiene.pdf?la=en</a></p>

	<p>Proper respiratory etiquette such as coughing/sneezing into your arm/sleeve will be taught to all students. Posters outlining these processes will also be posted in each classroom and key areas in the school.</p>
Physical Education classes	<p>Teachers should plan physical activities that support physical distancing while also limiting the use of shared equipment. Shared equipment should be disinfected regularly, and students should be encouraged to practice proper hand hygiene before and after participating in physical activity and equipment use.</p> <p>Refer to Physical &amp; Health Education (PHE) Canada's resource or the Ontario Physical and Health Education Association (Ophea) website for suggestions on teaching physical education in line with current public health recommendations.</p> <p>Limit the number of students going into the changeroom at one time (5 to 10) depending on the size of the change room. Use of personal backpack to house Phys ed clothing.</p> <p>Please refer to the Ontario Physical and Health Education Association website for additional information: <a href="https://www.ophea.net/">https://www.ophea.net/</a></p>
Staff screening and self-assessment	<p>For staff – Passive screening practices required</p> <p>A letter to staff will indicate that they must conduct a self-assessment every day if they come to school, we are to assume the self-assessment was conducted and they are safe to come to work – staff are not to report to work if having any symptoms (post the signs and symptoms throughout the school).</p> <p>Staff who are feeling sick should remain at home while waiting for test results. If a symptomatic individual tests positive for COVID-19, they should continue to remain in isolation at home and follow the directions of their local public health unit.</p> <p>Staff who have been in contact with someone who has tested positive with COVID-19 must follow the Public Health directions.</p>
Student screening and self-assessment	<p>It is not staff's responsibility to screen students for illness; however, if a staff member is concerned that a student is exhibiting signs of illness, this will be reported to the school administration. If a student voluntarily shares that they or a member of their family has COVID-19 symptoms or a positive test, this will also be shared with the school administrator.</p> <p>Parents are asked to screen their child daily for any symptoms of cold, flu, or other symptoms associated with COVID-19. Parents will be informed that health care professionals are not located within our schools, so staff will not be screening students; however, if staff observe a child that is ill, parents will be called to pick up their child from the school promptly.</p>



	<p>A letter for parents will include a checklist to perform daily screening of their children before arriving at school. If they send their child to school, we will assume the self-assessment was conducted and the child is safe to come to school (Passive screening).</p>
Testing and contact tracing	<p>The Ministry of Education, the Ministry of Health and Public Health will work closely with our school board to monitor and respond to reports of COVID-19 symptoms.</p> <p>For information on how schools will manage COVID 19 in schools please review <a href="https://www.ontario.ca/page/covid-19-guidance-school-outbreak-management">https://www.ontario.ca/page/covid-19-guidance-school-outbreak-management</a> and <a href="https://www.ontario.ca/page/operational-guidance-covid-19-management-schools">https://www.ontario.ca/page/operational-guidance-covid-19-management-schools</a></p> <p>Schools must ensure records of classes, including seating charts, bus cohorts, and daily records of any approved visitors to the school, including supply/occasional teachers or custodians are maintained and readily available to be provided to public health for contact tracing purposes. The sign-in book must include contact information of the person coming in the building as well as their name, time they entered and time they left the school.</p> <p>All school staff will receive training on outbreak management.</p>
Water Fountains	<p>Water fountains will be turned off (flushing schedule will be developed to ensure safety maintained) – water bottle filling stations will be available in all schools. Students and staff will be asked to bring a reusable container.</p>
Doors	<p>Where possible, and where it is safe to do so, classroom and office doors should be left open during the day to minimize the number of students or staff that need to open the door physically. A balance must be struck between the fire code to keep certain doors closed and open doors to minimize contact in high traffic areas.</p>
HVAC Systems	<p>All of our HVAC systems have been inspected and everything is operating properly.</p> <p>All filters on HVAC system have been changed.</p> <p>Ventilation rate has been set according to industry standards (should Health Canada or Local Public Health recommend a change in the ventilation rate then we will adjust through the building automation system accordingly).</p> <p>Approx. 80% of classrooms have windows that open. Opening windows during the day to allow fresh air in is encouraged.</p> <p>Standing fans in classrooms are not permitted at this time.</p>



## E) COMMUNICATION

Key Element	Board Action
Communication with parents	<p>We will clearly communicate expectations and provide guidelines to parents and students before in-class instruction resumes, and ongoing throughout the year. Communication strategies will include:</p> <ul style="list-style-type: none"> <li>- Prioritizing digital communications, such as fact sheets explaining new protocols and links to helpful information, as well as detailed instructions regarding screening and pick-up/drop-off procedures and protocols if a child or staff person becomes ill.</li> <li>- Considering alternative delivery models for activities such as parent-teacher conferences and school assemblies.</li> <li>- Providing clear guidelines and procedures for drop-off and pick-up to support physical distancing.</li> <li>- Providing information for students related to school hours, physical distancing, hand hygiene, remote learning, and resources to support learning and well-being at home.</li> <li>- Parents will be informed on the role they play in mitigating the spread of COVID-19 through physical distancing at school - they will be provided with guidance on drop-off and pick-up procedures to discourage congregating at school entrances.</li> <li>- Provide letter to parents before school begins on the symptoms of COVID-19, the self-assessment checklist that must be completed daily.</li> <li>- Each school will provide a letter to parents on the pickup and drop off protocol at their school, highlighting the importance of physical distancing, cohorting, hygiene, personal belongings, food, water bottle.</li> <li>- Consult with teachers and principals of Specialized Classrooms as frequent communication with parents is essential as students' needs may change.</li> </ul>
Communication with staff	<p>Staff meetings and training will be held before the students arrive to go over all of the protocols for physical distancing, cohorting, hygiene and cleaning protocols.</p> <p>Ongoing communication will be through email and the websites.</p> <p>Specialized classroom staff may require a more in-depth letter explaining the enhanced protocols they will need to follow.</p> <p>Meet with union, staff reps and other key stakeholders before school begins as required to review the plan in detail.</p>





**Scenario 2 - Modified school day routine based on smaller class sizes (15), cohorting and alternative day or week delivery**

**ADAPTED CURRICULUM DELIVERY**

The primary focus of instruction will be on the achievement of overall expectations across all subjects and grades. Curriculum delivery may depend on the adapted school environment model that is implemented in each school. Please note that many of the processes in this scenario are the same as in scenario 1 above, with the exception of the following:

**A) STAFF PREPARATION/CONSIDERATION/PROGRAMING**

Key Element	Board Action													
“Cohorting” refers to minimizing the number of students and teachers any individual comes in contact with, and to maintaining consistency in those contacts as much as possible.	<b>Adapted Elementary Timetable for cohorts of approx. 15.</b>													
	<b>10-day cycle Model 11122; 11222.</b> <ul style="list-style-type: none"><li>- Cohort A attends Monday, Tuesday &amp; Wednesday week 1 and Monday &amp; Tuesday week 2; Cohort B attends Thursday &amp; Friday week 1 and Wednesday, Thursday and Friday week 2.</li><li>- Specialty/Prep teachers will deliver instruction in the classroom following all health and safety protocols. School day times will remain the same. When students are learning at home there will be scheduled synchronous and asynchronous learning opportunities. Timetables will be provided to the principal and posted for parents and students. Teachers will be encouraged to live stream key elements of their day (opening exercises, shared reading, mental math). We will also assign all non-classroom teachers and support staff to classroom clusters and they will be responsible for providing and supporting teaching and learning both synchronously and asynchronously on the days students are not at school.</li><li>- <b>St Mark and St Joseph students will attend school on a daily basis.</b></li></ul>													
	<b>Adapted Secondary Timetable for cohorts of 15. Quadmester System: Two Courses per cycle. Might include early dismissal.</b> <b>11122; 11222</b> <table><tr><td></td><td>M</td><td>T</td><td>W</td><td>T</td><td>F</td><td></td></tr><tr><td>A.M.</td><td>C1 - P1</td><td>C1-P2</td><td>W1 C1, P1 &amp; 2 W2 C2, P1 &amp; 2</td><td>C2 – P1</td><td>C2-P2</td><td></td></tr></table>		M	T	W	T	F		A.M.	C1 - P1	C1-P2	W1 C1, P1 & 2 W2 C2, P1 & 2	C2 – P1	C2-P2
	M	T	W	T	F									
A.M.	C1 - P1	C1-P2	W1 C1, P1 & 2 W2 C2, P1 & 2	C2 – P1	C2-P2									

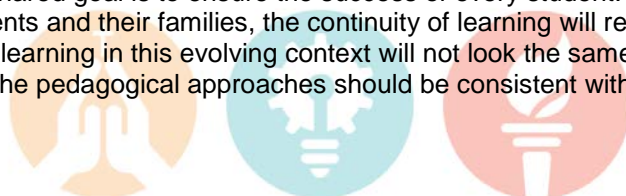
	P.M.	C1-P1	C1-P2		C2 – P1	C2-P2	
	<b>C- Cohort; P- Period, W- Week</b> <ul style="list-style-type: none"> <li>- No rotary permitted.</li> <li>- Where possible, the same teacher should remain with the class, or if different teachers are required, having staff come to the classroom so students do not have to change rooms.</li> <li>- Universal use of Google Classroom would allow for both synchronous and asynchronous groups to access the same curriculum. This supports the flipped classroom model – effective in several disciplines. Although MS Teams and D2L are permitted.</li> <li>- Co-op placements may be deferred to 2nd semester.</li> <li>- Dual Credit – details to be established in collaboration with Cambrian College.</li> <li>- SHSM programs that require hands-on work will be limited to scheduled days rather than daily.</li> <li>- For those students requiring 40 hours of community service to graduate, find opportunities in school to earn or defer to 2nd semester if options are limited. Student Success staff to explore online/virtual possibilities.</li> <li>- Students in specialized classrooms attend every day. Perhaps arriving later or leaving earlier for transportation.</li> <li>- Will need to offer remote learning for families that choose not to attend the in-person class.</li> </ul>						
Learn at home days	<p>Classroom teacher and other school staff will connect synchronously with students who remain home and provide asynchronous learning opportunities to his/her students as well.</p> <p>Teachers should strongly consider live recording parts of their lessons for students to observe while at home. Suggestions might include opening exercises, shared reading, mental math or other lessons that might be helpful to students who are at home.</p> <p>Secondary School – flipped classes where appropriate. Extensive use of Google classroom to support both synchronous and asynchronous learning.</p>						
Assignment of support staff ECE EAs Resource Teacher Attendance Counsellors	<p>ECEs will work collaboratively with their teacher partner to deliver the kindergarten program, maintaining physical distancing and hygiene protocols.</p> <p>Support Staff to limit their support to a division if possible. I.E. one EA for primary, one for junior classes.</p> <p>Support staff provide check-ins with students whose families have chosen for them not to attend in person.</p> <p>School EAs will be assigned to work in classrooms with high needs.</p> <p>Itinerant support staff (CYWs and ISWs) will be assigned to schools and work virtually with groups of students, can also be assigned to classes.</p>						

	<p>Continue check ins with families, sending home resources and offering social-emotional and academic support.</p> <p>Implement the use of Video check-ins on days students are learning from home.</p> <p>Support workers can be available to zoom into different classrooms.</p> <p>Use of Lexia for use when learning in class or remotely Gr 1-3.</p> <p>Assist classroom teachers with accommodations on the IEP.</p> <p>Continue with IPRCs as required.</p> <p>Flag students who require assistance in class and virtually.</p> <p>Monitor use of Read and Write software.</p> <p>Provide support to all staff regarding students of concern.</p> <p>Monitor use of SEA equipment.</p> <p>Offer online intervention formats for parent meetings, virtual check-ins.</p> <p>Maintain referral system as per board attendance protocol.</p> <p>Home visits by attendance counsellors may be conducted with use of PPE.</p> <p>Provide teachers with strategies to engage students with attendance challenges.</p> <p>Motivate students with awareness activities such as Attendance Awareness Month.</p> <p>Utilize social media and tip sheets to promote regular participation and attendance both online and within the school.</p>
SHSM, OYAP, COOP	Promote and plan alternative academic learning options for SAL, PEACE, Open Doors.

**Scenario 3 - Remote learning (parental choice during school-based model or during full school closure)**

**PREAMBLE**

In this scenario, the Ministry of Education as well as the Sudbury Catholic District School Board expects that every student will continue to learn while in-school classes are suspended or if remote learning is the model of choice. Our shared goal is to ensure the success of every student. Given the range of circumstances of students and their families, the continuity of learning will require a range of delivery options. Teaching and learning in this evolving context will not look the same as the customary in-class experience, however, the pedagogical approaches should be consistent with those of a regular classroom setting.



PPM 164 Requirements for Remote Learning states “that during full or partial school closures, or under any other periods of remote learning, it is crucial to keep students engaged in their learning. Students should have access to a school community, a support network, and authentic educational experiences in order to continue to progress in their learning.”

Our **Ontario Catholic School Graduate Expectations** guide our work in all areas. An online learning environment requires us to also pay close attention to these expectations. We must help students see themselves in the guiding principles of being:

- A discerning believer formed in the **Catholic** Faith community
- An effective communicator
- A reflective, creative and holistic thinker
- A self-directed, responsible, lifelong learner
- A collaborative contributor
- A caring family member
- A responsible citizen

Our Catholic education system is one where **equity and inclusivity** prosper and gives all students the opportunity to reach their highest potential. We share a belief in the need to help all students learn and to prepare them for their role in society as engaged, productive and responsible Catholic citizens. Yet, some groups of students, including recent immigrants, children from low-income families, Aboriginal students, boys and students with special education needs, among others, may be at risk of lower achievement.

“Students whose learning has been traditionally compromised in schools remain at risk in distance learning... Teachers and school systems should redouble their efforts to ensure that the needs of these students are met.” (Fisher, Fray, Hattie. p.7)

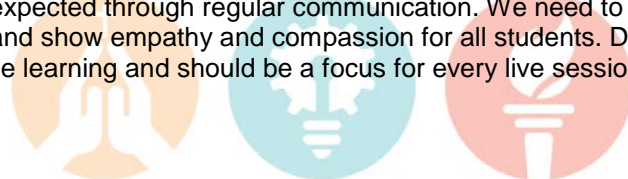
Equity and excellence go hand in hand. An equitable and inclusive education system is fundamental to achieving high levels of student achievement. It is recognized internationally as critical to delivering a high-quality education for all learners.

### THE 3 Cs

1. **Connect:** As students and staff migrate to online learning, it will be essential to focus on Connecting. The concept of connection means to ensure that students are connected to the platform for instruction. But more importantly, to be connected to their educators and to one another. One way to do that is to learn students’ interests. Students need to be given opportunities to be heard and seen which means we provide regular synchronous check-ins. Having ‘office hours’ and synchronous learning opportunities every day will allow this important aspect of connecting to take place.

“As important, high levels of positive relationships build trust and make your classroom a safe place to explore what student do not know, their errors and misconceptions. Indeed, powerful student-teacher relationships allow errors to be seen as opportunities to learn.” (Fisher, Frey, Hattie. P.49)

2. **Communicate:** As students begin to use the platform for instruction, we must develop norms and expectations for online interaction and give students ownership and responsibilities. We need to create a consistent means by which we communicate with students and parents. Ensure students know what is expected through regular communication. We need to model the Catholic Graduate Expectations and show empathy and compassion for all students. Discussions are an important aspect of online learning and should be a focus for every live session. (Fisher, Frey, Hattie p. 56)



3. **Content:** We will be required to teach, assess, evaluate and report on all subject areas including the learning skills and work habits. In order to do so, we must teach to the big ideas and overall expectations as a starting point. The specific expectations become the vehicle by which children acquire and demonstrate the overall expectations. Students must be given opportunities to learn synchronously and asynchronously on a daily basis. Cross-curricular learning will be very valuable as well as differentiated instruction and universal design for learning.

Fisher, Frey and Hattie discuss the importance of teacher credibility which has an effect size of 1.09 (far above the standard .40 effect size for impact). Teacher credibility “is the label we give to the concept that students believe that they can learn from their teachers. (p.66). This credibility can be increased by the following four areas:

- Trust (true to your word and reliable)
- Competence (know the stuff and know how to teach the stuff)
- Dynamism (passion teachers bring to the classroom and their content)
- Immediacy (accessibility and relatability)

## STUDENT WELL-BEING AND MENTAL HEALTH

This should be at the core of a learn @ home plan. It is foundational in ensuring a return to a welcoming environment that supports learning for all. Prior to school starting in the fall of 2020, School Mental Health Ontario will provide school boards with a professional learning framework and toolkit to support mental health of all students that can be tailored at the board and school level for different audiences. The professional learning will have a strong focus on building students’ social-emotional learning skills so that they can build resilience, manage their stress and build positive relationships. See website at: <https://smho-smso.ca/>

Mental health staff will be assigned to schools and will work with the school principal and teachers in order to address the needs of students. This work might look like one on one connections with students, small group sessions as well as whole class lessons.

Fisher, Frey & Hattie (2020) indicate that we learned some important lessons during the spring of 2020. One of which is that “social and emotional elements of learning are interwoven with academic ones” (p.168).

## SYNCHRONOUS AND ASYNCHRONOUS LEARNING

Synchronicity means doing something at the same time, and with learning, it’s no different. Synchronous learning refers to a learning event in which a group of participants is engaged in learning at the same time. For that, they should be in the same physical location as a classroom or the same online environment, such as in a web-conference, where they can interact with the instructor and other participants. There is real interaction with other people.

PPM164 defines synchronous learning as “learning that happens in real time. Synchronous learning involves using text, video, or voice communication in a way that enables educators and other members of the school or board-based team to instruct and connect with students in real time. Synchronous learning supports the well-being and academic achievement of all students, including students with special education needs, by providing educators and students with an interactive and engaging way to learn. It helps teachers provide immediate feedback to students and enables students to interact with one another.”

If synchronous learning takes place at the same time, **asynchronous learning refers to the opposite.** The instructor, the learner, and other participants are not engaged in the learning process at the same time. **There is no real-time interaction with other people. “Learning is not delivered in real time.**



**Asynchronous learning may involve students watching pre-recorded video lessons, completing assigned tasks, or contributing to online discussion boards” (PPM 164).**

In the Learn @ Home model, educators will be required to engage in both forms of learning on a daily basis. Students will be given scheduled time for synchronous and asynchronous learning on a daily basis.

It is important to note that an online learn @ home environment does not mean we assign asynchronous work assign on Monday and have students ‘hand’ it in on Friday. We must connect, communicate and teach the content on a daily basis.

### **Synchronous “Live” Instruction**

- Educators must use professional judgement at all times and ensure that protocols are in place to ensure the safety and privacy of all involved.
- Create norms which govern how individuals in the group interact with one another.
- Teachers may choose to share their screen or to focus the computer camera on themselves or on the writing on a board/flipchart paper/book etc.
- We recommend when there is 1:1 interaction, that a parent/guardian should be present or consider inviting another colleague to join the online event. Students should be advised to access any public or “live” learning event in the comfort of a more public space in the home such as the kitchen.
- Educators should immediately report any inappropriate behaviour to their school principal for support on follow-up, up to and including discipline, as appropriate.
- Recording all Google Classroom/MS Teams/D2L lessons so that you can post them for students who missed your class will be essential for all students.
- It is important to let students and parents know that learning may be recorded.
- Parents and students will not have the ability to record your lesson from the Google Meet and other platforms, however, be mindful that students can use other devices to record.
- Advise students of the dress code. Students should be in clothes they would wear at school i.e. not in pajamas. Let students know that they will be expected to turn off their camera if this is the case. Then it should be reported to your Principal immediately.
- Remind students that teachers will be controlling students’ microphone functions i.e. muting and unmuting when delivering a lesson whenever necessary.
- Please remind students that the “chat” feature is not for side conversations and teachers can read all chat comments. Chat messages are not private. If students misbehave and do not follow directions, please report it to your Principal immediately.
- Suggested work locations for students are a quiet space i.e. home office, the family room, kitchen, etc. (i.e. not on a bed).
- Inform students that inappropriate behaviour will be reported to the principal/vice-principal.

### **EFFECTIVE PEDAGOGY**

As PPM 164 states: “Teachers are expected to carry out the instructional duties assigned to them by their principals and to comply with all professional standards and obligations under the Education Act and the Ontario College of Teachers Act, 1996. These include having responsibility for the effective instruction and evaluation of the progress of students in the subjects and classes assigned by the principal (including



by electronic means), preparing and submitting lesson plans to the principal, and communicating regularly with parents.

Three principles of effective online pedagogy:

Principle 1: Let the students do (most of) the work. The more time students spend engaged with the content, the more they will learn.

Principle 2: Interactivity is the heart and soul of effective learning.

Principle 3: Strive for presence: social, cognitive, and teaching presence.

Some of the considerations of excellent online teaching and learning are:

- Creating a sense of community
- 3Cs - connect, communicate then content
- Engaging, interactive, collaborative
- Planned and purposeful
- Whole group, small group and individual groupings
- Synchronous (all students learn at the same time and same place)
- Asynchronous (students learn online at different times and places when appropriate for them)
- Cross-curricular (faith, literacy and math across the curriculum)
- Gradual release of responsibility where you move from whole group to shared and guided instruction which leads to independent learning
- Differentiated instruction (address individual needs of students by differentiating the content, the process and the product which would include experiential opportunities)
- Universal design for learning (UDL)
- Open Access “office hours” (time for teacher to be available to students/parents for support)
- Use of a variety of electronic tools and platforms (for example: e-mails, discussion boards, chats, video conferencing, audio recordings, blogs, wikis, podcasting, e-portfolios, social media etc...)
- Develop a flexible daily/weekly schedule
- “Design tasks with engagement in mind. The tasks student complete, whether synchronously or asynchronously, should foster learning. Tasks that are busy work, keeping hands busy but minds turned off, are not going to deliver the kind of learning that keeps students engaged...Learning remotely doesn’t need to be reduced to completing endless amounts of worksheets.” (Fisher, Frey & Hattie p. 111)
- Do not share passwords
- Teachers should be the last one to leave synchronous learning session
- Teachers and students must be aware of and respect board policies regarding digital conduct and privacy such as the Board’s responsible use of information technology for teachers and students (APG HR 24, SS18) as well as the Privacy Information Management APGs PIM01, PIM02

## GETTING STARTED

We need to begin by “helping students understand **what** they are supposed to learn, **why** that is important, and **how** they will know if they learned it. These can be organized into three questions that contribute to teacher clarity.

- What I am learning today?
- Why am I learning it?
- How will I know that I learned it?”  
(Fisher, Frey & Hattie p. 82)

As you get started, it is of utmost importance to begin with the curriculum. Ask yourself the following questions:

- What's most important/matters most going forward for my students' learning?
- What evidence of learning do I have, and not have yet?
- What learning do I want to linger and endure for my students?
- What are the BIG IDEAS that need to be focused on?
- What are the nouns (concepts) and the verbs (skills) in the expectations?
- What are the overall expectations that I need to ensure that I focus on?
- How will I offer feedback and assess the student learning?
- How can I ensure to infuse our faith across the curriculum?

Effective online pedagogy is very similar to that of in classroom pedagogy. We need to focus on effective planning of the curriculum opportunities for teaching and learning. It is also critical to plan with the end in mind to ensure proper assessment and evaluation throughout the learning. We first get to know our students by connecting with them, their interests, their learning styles and their readiness. Conducting diagnostic assessments will be critical. The assessment for and as learning throughout to ensure the students know what is expected of them at all times, we develop clear learning goals and success criteria together. “The tasks students are assigned must be aligned with the goal for learning” (Fisher, Frey & Hattie. P.126).

During the learning the students receive timely and effective feedback to improve and to highlight their strengths.

**Universal Design for Learning (UDL)** is a holistic approach to learning for all. Universal Design for Learning is an educational framework based on research in the learning sciences, including cognitive neuroscience, that guides the development of flexible learning environments and learning spaces that can accommodate individual learning differences.

Recognizing that the way individuals learn can be unique, the UDL framework, calls for creating learning opportunities from the outset that provides:

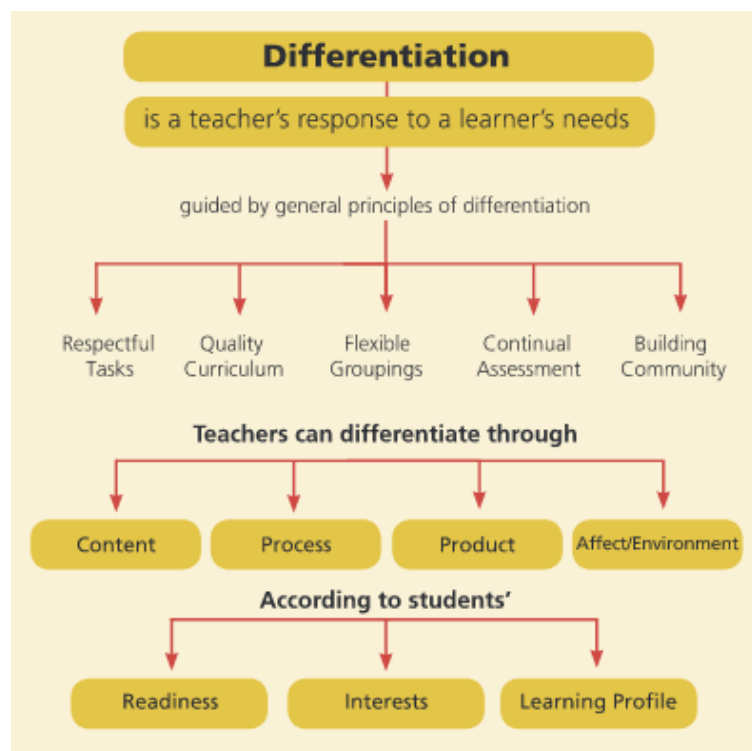
- *Multiple means of representation* to give learners various ways of acquiring information and knowledge,
- *Multiple means of expression* to provide learners alternatives for demonstrating what they know, and
- *Multiple means of engagement* to tap into learners' interests, challenge them appropriately, and motivate them to learn.



UDL is intended to increase access to learning by reducing physical, cognitive, intellectual, and organizational barriers to learning, as well as other obstacles. UDL principles also lend themselves to implementing inclusionary practices for learning.

The concepts of ***Differentiated Instruction (DI)*** can also guide our work to ensure equity and inclusivity. DI is effective instruction that is responsive to students' readiness, interests and learning preferences. All three characteristics of the learner—readiness, interests and preferences—allow educators and students to build new learning through connections to existing knowledge and preferred ways of working. The process of differentiating instruction for students depends on the ongoing use of assessment to gather information about where students are in their learning and about their readiness, interests and learning preferences. Teachers use this information to vary the learning environment, instruction, and assessment and evaluation.

*Readiness* refers to the student's starting point for learning, relative to the concept being studied. Attention to students' *interests* enhances the relevancy of learning by linking new information to students' experience and enthusiasm. *Learning preferences* are the many different ways in which learners prefer to acquire, process and work with information. Learning preferences are influenced by gender, culture, the classroom environment, learning styles and multiple intelligences. By attending, at various times, to a learner's readiness, interests and learning preferences, we increase the likelihood that students will be able to build new learning through connection to existing knowledge and preferred ways of working and that they will be engaged in the learning.



## PLATFORMS

Educators will choose between three board supported platforms for instruction:

1. Google Classroom
2. MS Teams
3. VLE



"These platforms will allow real-time communication between educators, student and parents during remote learning (PPM164).

Our website has many resources to help in the implementation of any of these platforms. See <https://sites.google.com/sudburycdsb.ca/learnathome/home>.

For any educator device technical support,, please use the service call email ([service\\_calls@scdsb.edu.on.ca](mailto:service_calls@scdsb.edu.on.ca)) or telephone at 705-673-5620 extension 303.

There is also a technical support system for students and parents to access for the use of board-provided devices and platforms at the following email address: [studenthelp@sudburycatholicschools.ca](mailto:studenthelp@sudburycatholicschools.ca).

"...it isn't the medium that matters...By shifting the attention from the tools (which are cool and seemingly infinite) to the functions, we can hone what we need to accomplish in order to build students' capacity for face-to-face and distance learning" (Fisher, Frey, Hattie p.105). Some of the functions could be: finding information, using information, creating information or sharing information.

## **TIMETABLING & SCHEDULING**

Take care of yourself first. Like they say, you cannot be a help to others if you are not taking care of yourself first. Although this online learning may be new to you, you are not new to education and you have a lot of knowledge and skills that can be leveraged in this Learn @ Home setting. You can design and deliver a quality distance learning experience for your students. Fisher, Frey and Hattie (2020) suggest that with a 'work at home' model it will be important for you to:

- Keep a dedicated workspace
- Set ground rules for the people in your space
- Create morning routines
- Maintain regular work hours
- Schedule breaks
- End your day with a routine
- Socialize with colleagues
- Have a connected and meaningful conversation each day with someone outside of your home

It will be essential to begin with a classroom management plan. This plan "captures the norms, agreements, procedures, and schedules that will be used". It also "outlines the procedures, routines and expectations for all the students in the class." (Fisher, Frey, Hattie p.25).

The primary focus of instruction through remote learning will be on the achievement of the overall expectations across all subjects and grades. Students participating in remote learning should be timetabled and provided with a schedule of classes that are teacher-facilitated and support all areas of the curriculum, as they normally would in school instruction. PPM 164 states that "during remote learning, students and parents must be provided with a daily schedule or timetable that includes 300 minutes of learning opportunities, with a combination of synchronous and asynchronous learning activities. Programming must be based on the full Ontario curriculum and included opportunities for guided instruction, large and small-group learning, synchronous check-ins, and asynchronous independent work. Teachers must be available to student at all times during the teachers' assigned teaching timetables, as they would be if they were face-to-face in a classroom setting".

In the Continuation of the Learn @ Home model, all curriculum subjects are to be taught, assessed, evaluated and reported upon as it would be in a classroom environment. This means that teachers must develop and submit to their principal, to parents and students a timetable/schedule for the week. This schedule must outline the daily activities of the teacher and students. Build in time for instruction, lunch,

office time for students to reach out for support, planning time and yes even recess. There will be time for both synchronous and asynchronous learning. Teachers will also be asked to submit their long-range plan as well as any unit/short term plans.

As PPM 164 states: "The scheduled synchronous learning sessions must be communicated to parents and students. Educators should use their professional judgement to provide some flexibility to students on an individual basis when students are unable to participate in synchronous learning".

Minimum amount of time per day that students, depending on their grade level must be provide with synchronous learning as part of their scheduled or timetabled learning.

Division	Grade level of students	Daily minimum synchronous learning time requirement*
Elementary	Kindergarten	180 minutes
Elementary	Grades 1 to 8	225 minutes
Secondary	Grades 9 to 12	The higher of 60 minutes for each 75 minutes class period**  or 225 minutes per day for a full course schedule

\*This is in addition to asynchronous learning time

\*\* The synchronous learning time requirements for any period that is not 75 minutes should be adjust to reflect the ratio

The synchronous learning time requirement outline in the table above may be divided into shorter periods throughout the school day. For example, a child in Kindergarten may participate in an opening excercises for 10 minutes with their whole class, as well as a combination of whole-group and small-group sessions throughout the school day, and a 10 minutes closing exercise with their class at the end of the school day.

It is expected that synchronous learning will be provided for large and small groups of students each day, in a manner similar to in-person classroom teaching. Synchronous learning time may include students working independently and in small groups while engaged in a virtual classroom with the teacher overseeing their learning and available for questions. The synchronous learning requirements are a part of the 300-minute instructional day during which teachers remain available to students as per the previous section "Minimum Requirements for Engaging Students during Remote Learning."

Additional group meetings may take place between educators and students as needed to address specific learning needs.

In the timetable/schedule, teachers must show when each subject will be taught and will follow the regular instructional minutes that are provided every year. The teacher will also schedule both synchronous and asynchronous time every day and indicate this on the timetable. Educators must be available to students synchronously by preparing daily lessons, whole group, small group and one to one sessions which will also be scheduled and recorded for future viewing by students who are unable to attend at specific times. There will be 300 minutes of instructional time each day. This time must be a blend of synchronous and asynchronous learning opportunities.



**Primary Weekly Timetable**

Time	Monday	Tuesday	Wednesday	Thursday	Friday
9:00 – 10:15 (90 minutes)	Religion (S/AS)  Literacy (synchronous)	Religion (S/AS)  Literacy (synchronous)	Religion (S/AS)  Literacy (synchronous)	Religion (S/AS)  Literacy (synchronous)	Fully Alive (S/AS)  Literacy (synchronous)
10:15 – 10:30	Recess	Recess	Recess	Recess	Recess
10:30 – 12:00 (90 minutes)	Literacy (asynchronous)  Office time	Literacy (asynchronous)  Office time	Literacy (asynchronous)  Office time	Literacy (asynchronous)  Office time	Literacy (asynchronous)  Office time
12:00-12:45	Lunch	Lunch	Lunch	Lunch	Lunch
12:45-2:00 (75 minutes)	DPA (15min) Math (synchronous)  Math (asynchronous)	DPA (15 min) Math (synchronous)  Math (asynchronous)	DPA (15 min) Math (synchronous)  Math (asynchronous)	DPA (15 min) Math (synchronous)  Math (asynchronous)	DPA (15 min) Math (synchronous)  Math (asynchronous)
2:00 – 2:15	Recess	Recess	Recess	Recess	Recess
2:15 – 3:00 (45 minutes)	Phys. Ed./Health (S/AS)	Science/Soc. Studies (S/AS)	Phys. Ed./Health (S/AS)	Science/Soc Studies (S/AS)	The Arts (S/AS)

S: synchronous AS: Asynchronous

**Junior Weekly Timetable**

Time	Monday	Tuesday	Wednesday	Thursday	Friday
9:00 – 10:15 (90 minutes)	Religion (S/AS)  Literacy (synchronous)	Religion (S/AS)  Literacy (synchronous)	Religion (S/AS)  Literacy (synchronous)	Religion (S/AS)  Literacy (synchronous)	Fully Alive (S/AS)  Literacy (synchronous)
10:15 – 10:30	Recess	Recess	Recess	Recess	Recess
10:30 – 12:00 (90 minutes)	Literacy (asynchronous office time)  Core French	Literacy (asynchronous office time)  Core French	Literacy (asynchronous office time)  Core French	Literacy (asynchronous office time)  Core French	Literacy (asynchronous office time)  Core French

12:00-12:45	Lunch	Lunch	Lunch	Lunch	Lunch
12:45-2:00 (75 minutes)	DPA (15min) Math (synchronous)  Math (asynchronous office time)	DPA (15 min) Math (synchronous)  Math (asynchronous office time)	DPA (15 min) Math (synchronous)  Math (asynchronous office time)	DPA (15 min) Math (synchronous)  Math (asynchronous office time)	DPA (15 min) Math (synchronous)  Math (asynchronous office time)
2:00 – 2:15	Recess	Recess	Recess	Recess	Recess
2:15 – 3:00 (45 minutes)	Phys. Ed./Health (S/AS)	Science/Soc. Studies (S/AS)	Phys. Ed./Health (S/AS)	Science/Soc Studies (S/AS)	The Arts (S/AS)

S: synchronous AS: Asynchronous

#### Intermediate Weekly Timetable

Time	Monday	Tuesday	Wednesday	Thursday	Friday
9:00 – 10:15 (90 minutes)	Religion (S/AS)  Literacy (synchronous)	Religion (S/AS)  Literacy (synchronous)	Religion (S/AS)  Literacy (synchronous)	Religion (S/AS)  Literacy (synchronous)	Fully Alive (S/AS)  Literacy (synchronous)
10:15 – 10:30	Recess	Recess	Recess	Recess	Recess
10:30 – 12:00 (90 minutes)	Literacy (asynchronous office time)  Core French	Literacy (asynchronous office time)  Core French	Music  Core French	Literacy (asynchronous office time)  Core French	Literacy (asynchronous office time)  Core French
12:00-12:45	Lunch	Lunch	Lunch	Lunch	Lunch
12:45-2:00 (75 minutes)	DPA (15min) Math (synchronous)  Math (asynchronous office time)	DPA (15 min) Math (synchronous)  Math (asynchronous office time)	DPA (15 min) Math (synchronous)  Math (asynchronous office time)	DPA (15 min) Math (synchronous)  Math (asynchronous office time)	DPA (15 min) Math (synchronous)  Math (asynchronous office time)
2:00 – 2:15	Recess	Recess	Recess	Recess	Recess

2:15 – 3:00 (45 minutes)	Phys. Ed./Health (S/AS)	Science/Soc. Studies (S/AS)	/Health (S/AS)	Science/Soc Studies (S/AS)	The Arts (S/AS)
-----------------------------------	-------------------------------	-----------------------------------	-------------------	----------------------------------	--------------------

S: synchronous AS: Asynchronous

On a daily basis it will be important to “furnish a daily schedule at the beginning of the class meeting. Learning intentions (goals) and success criteria are crucial for learning. Providing a schedule for the class meeting assists students in self-regulation of their cognitive and attentional resources. The consistent use of a posted schedule establishes a predictable learning environment and assist learners in pacing their rate of work. A daily schedule is particularly useful for students who have difficulty transitioning from one task to another and are an excellent support for some students with disabilities who may require more structure.” (Fisher, Fray and Hattie, p. 33)

It is the school administrator’s responsibility to ensure the educational programs and curriculum are being implemented. The administration is also a great support for educators, students and parents. On the platform for instruction, each teacher will invite the principal, vice-principal, planning time teachers as well as any other support staff that is working with the class. (ex: EA, Indigenous support worker, social worker)

We are asking all students to participate in the Learn @ Home model and expect teachers to take note of any student(s) who are not participating. Teachers are expected to contact these families and discuss how they can support the student’s participation. Inform the school principal when, after the teacher has contacted the home and have made attempts to support participation, the names of students who are not participating. Our approach will be that of equity and inclusivity and we will differentiate instruction and accommodate students to the best of our ability to ensure full engagement and participation.

## EXEMPTION FROM SYNCHRONOUS LEARNING

As stated in PPM 164, school boards must allow for students to be exempted from the minimum requirements for synchronous learning stated above, on an individual basis.

School boards must develop a process to obtain and acknowledge the receipt of exemption forms. Requests for an exemption must be made in writing. Exemption from synchronous learning may be requested by parents or by students who are 18 years of age or older, and students who are 16 or 17 years of age but have withdrawn from parental control.

To support meaningful access to education, alternative learning approaches must be put in place for all exempted students – for example, correspondence, print, or broadcast media instruction that is based on the individual student’s needs and circumstances. Additional supports for parents should also be considered. Exempted students must be provided with a daily schedule or timetable in accordance with the 300-minute instructional day.

## STUDENT ATTENDANCE

- PPM 164 states that “Student attendance must be taken daily at the elementary level and per course at the secondary level. Principals must ensure that student attendance records are submitted and that a staff member is assigned to contact parents in the case of an unexpected absence, in accordance with school and board attendance protocols.



- In cases where a student is unable to participate in a synchronous learning session – for example, their device may be shared with a parent in the home – teachers should be informed, and they should make curriculum and assessment accommodations on an individual basis.
- Attendance counsellors could be used to further support student attendance, engagement and well-being”.

## **REFRESHER LEARNING**

Upon our return to school in the Fall 2020, “Refresher Learning” is going to be essential in the continuation of Learn @ Home. The goal of this is to recognize what students have learned from their experience during the school closure period and to ensure students are well supported for their ongoing learning in the next year or course. Some students, such as those with learning disabilities and those who did not engage, may require additional time and support to close the gaps in their learning. Plans for refresher learning must be included in our re-entry plans.

## **PLANNING (PREP) TIME TEACHER ROLES AND RESPONSIBILITIES**

All subjects must be taught, assessed, evaluated and reported upon. The planning time teacher must become a collaborator on the learning platform with the classroom teacher and their time must appear on the timetable. Cross curricular connections will be essential. All teachers must work collaboratively in order to find the best way to provide a cross curricular approach. In the front matter of every curriculum, there is a section on the importance of cross curricular approaches. Learning is not done in isolation. We know that literacy and numeracy are easily integrated across the curriculum. The planning time teacher must teach, assess, evaluate and report on the subject that they were provided in the fall of 2020.

## **SUPPORT STAFF ROLES AND RESPONSIBILITIES**

During the Learn @ Home environment, there are several support staff that can help.

These staff will be assigned to schools and classrooms for a block of time. During that time, they will connect with the principal to determine a plan for support. These support staff will connect with the classroom teachers and will be invited into the teaching and learning platform in order to provide support, connect with students and families as well as provide lessons. They will work collaboratively with the classroom teacher and participate in the online learning platform.

Educational Assistants (EA)  
Special Education Resource Teachers (SERT)  
Indigenous Support Workers (ISW)  
Intensive Support Facilitators (ISF)  
Empower Teachers  
Psychologist  
Speech and Language Pathologists  
Attendance Counsellors  
Regulated Mental Health Workers  
Itinerant CYW (Behaviour and Mental Health)  
English Language Learner Teacher

## **RESOURCES AND PROFESSIONAL LEARNING**

We have developed an incredible website for resources and professional learning. Please visit at:  
<https://sites.google.com/sudburycdsb.ca/learnathome/home>



If you require information or professional learning, please reach out to a colleague or to a consultant on the Learning Support Services Team.

## **SPECIAL EDUCATION**

As per PPM 164 “where appropriate, educators should provide more opportunities than the minimum requirements for synchronous learning for students with special education needs, based on their individual strengths and needs, and provide differentiated support and instruction”.

Students with special education needs must receive appropriate accommodations and modifications where necessary. A student’s IEP must guide the work and should be adapted for online learning accommodations. “If it is not possible to meet a student’s needs through synchronous learning, educators and families will work together to find solutions” (PPM 164).

As specified above, equity and inclusivity will be a focus and we must pay close attention to our students with special education needs. Our commitment to ensure equity for all will continue to help us strive for the success for all.

Special education staff will work directly with the school principal and the teachers to address the needs of students. This might be in the form of one on one and small group support. Every school has special education teachers that will connect with students who may be struggling especially those with IEPs in order to ensure that we are providing adequate accommodations within the Learn @ Home model. We must provide “continued access to assistive technology, including Special Education Amount (SEA) equipment, where possible, to support student with special education needs as they participate in remote learning. In situations where access to assistive technology is not feasible, educators are expected to work with students and parents to determine workable solutions on an individual basis.” (PPM 164).

## **ASSESSMENT, EVALUATION AND REPORTING**

In a learn @ home model, we must continue to follow Growing Success and the guidelines for assessment, evaluation and reporting. Please refer to Growing Success document for further reading: <http://www.edu.gov.on.ca/eng/policyfunding/growSuccess.pdf>

As well as the Growing Success Kindergarten Addendum at: <http://www.edu.gov.on.ca/eng/policyfunding/growingSuccessAddendum.pdf>

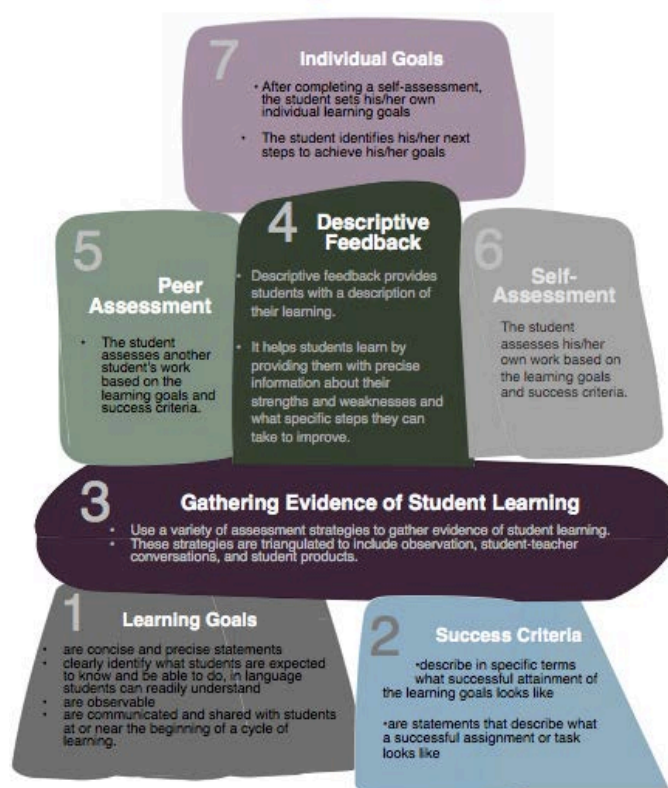
As per PPM 164 “teachers should provide daily opportunities for each student to receive meaningful feedback. Teachers should provide differentiated support to all students, including English and French Language Learners, and student with special education needs who have an Individual Education Plan (IEP).

At Sudbury Catholic, we have used an Inukshuk image to demonstrate an overview of assessment for and as learning. In an online environment, these concepts still apply and in fact, the importance of descriptive and timely feedback is critical.





### *Assessment **for** learning and **as** learning: Practices*



## **FRENCH AS A SECOND LANGUAGE**

In a learn @ home environment, students in French Immersion must receive French instruction. This can be done with daily synchronous learning so that the classroom teacher speaks in French and the students are given opportunities to speak French as well. During the recent digital learning, parents and students felt they needed more opportunities to listen and speak in French.

## **ENGLISH LANGUAGE LEARNERS**

In learn @ home environment, students who are English Language Learners may need more support to fully understand and grasp the lessons and the learning. Strategies used to support them in the classroom should be used in the online environment as well.

## **INDIGENOUS EDUCATION**

As stated in the preamble, we have a shared goal to ensure equity and inclusivity for all students. Ontario's Indigenous Education Strategy is supporting First Nation, Métis and Inuit students to achieve their full potential. The Sudbury Catholic District School Board is committed to improving Indigenous education, improving student achievement and well-being, and closing the achievement gap between Indigenous students and all students.

For more information on the Indigenous Strategy see the following site:

<http://www.edu.gov.on.ca/eng/indigenous/>

It is also essential that all students learn about Indigenous people and the rich culture and history. We have as part of the revised 2018 social studies/history and geography curriculum, there is a section on Indigenous education highlighted in the curriculum. It states: "Consistent with the strategy, the present

revision of the social studies and history curriculum was developed in collaboration with First Nations, Métis, and Inuit educators, community members, and organizations in response to the Truth and Reconciliation Commission's calls to action numbers 62 and 63. The revision strengthens learning connected with Indigenous perspectives, cultures, histories, and contemporary realities, including those related to the residential school system and treaties. It is essential that learning activities and materials used to support Indigenous education are authentic and accurate and do not perpetuate culturally and historically inaccurate ideas and understandings. It is important for educators and schools to select resources that portray the uniqueness of First Nations, Métis, and Inuit histories, perspectives, and world views authentically and respectfully. It is also important to select resources that reflect local Indigenous communities as well as First Nations, Métis, and Inuit individuals and communities from across Ontario and Canada. Resources that best support Indigenous education feature Indigenous voices and narratives and are developed by, or in collaboration with, First Nations, Métis, and Inuit communities. Schools can contact their board's Indigenous lead for assistance in evaluating and selecting resources." (p.14)

## **EXPERIENTIAL LEARNING**

As an important new strategy, the ministry of education is paying attention to the experiential learning of our students. Within a learn @ home environment, we are still able to promote the guiding principles of the experiential initiative.

As outlined in the ministry of education website, experiential learning is:

### **"Learning beyond the classroom"**

Today's students need learning that goes beyond the classroom. School-work programs expand students' learning by helping them:

- understand more about the industries they may want to pursue in the future
- get exposed to career options in industries they may not have known about or even considered
- develop essential workplace skills
- see how their in-class learning can be applied in the workplace
- make more informed decisions about their education and career path so they make a successful transition into the job market

Giving students the chance to explore different career options and build their skills will help them prepare for the jobs of tomorrow."

## **PARENTAL ENGAGEMENT AND COMMUNICATION**

Engagement and communication with parents/guardians in a learn @ home environment is critical.

All educators are expected to communicate regularly with families. "Teachers should accommodate parents who request a meeting through other modes (e.g., by telephone, through virtual platform) when an in-person meeting is not possible" (PPM 164).

"Parents can inform the teacher and principal of any issues that their child may be experiencing with remote learning, and provide steps that parents may take to resolve any issues" (PPM 164).

A phone call to parents is often the best form of communication when there may be something to discuss. Many teachers have chosen to communicate information via a digital format and can continue to do so as long as they are consistent and communicate effectively. Ideally, teachers would use their online platform to communicate however, tools such as Remind app, Dojo, SeeSaw may enable educators to communicate with parents more effectively and in a timely manner.

## REFERENCES

1. Fisher, D., Frey, N., Hattie, J., The Distance Learning Playbook Grades K-12: Teaching for engagement and impact in any setting. Corwin 2020
2. Policy Program Memorandum #164 Requirements for Remote Learning





**SUDBURY  
CATHOLIC  
DISTRICT  
SCHOOL BOARD**

165A D'Youville Street  
Sudbury ON P3C 5E7  
705.673.5620  
sudburycatholicschools.ca

Dear Parents and Guardians,

**Re: Wearing a Mask or Face Covering**

We are very pleased to once again welcome your children into both our face to face and remote learning programs. This year is a year like no other we have experienced. One such change this year is the requirement for students Grades 4 to 12 to wear masks and a strong recommendation for students Kindergarten to Grade 3 to also wear a mask. We hope that the guidance below will be helpful to you. A mask or face covering acts as a barrier, as it reduces the chance of spreading respiratory droplets to others and prevents droplets from landing on surfaces when you cough or sneeze. As such, masks are very important in the prevention of the transmission of COVID-19.

a) Your child's mask/face covering should:

- Fit snugly but comfortably against the side of the face covering their nose and mouth.
- Be secured with ties or ear loops.
- Include multiple layers of fabric.
- Allow for breathing without restriction.
- Be able to be washed and machine dried without damage or change to shape.
- When a mask becomes damp or humid it should be replaced.
- Do not reuse a single-use mask. After use the mask should be discarded.

b) To remove your mask safely you must:

- Wash your hands before removing your mask.
- Be very careful not to touch your eyes, nose, or mouth.
- Wash your hands immediately after you remove it.
- Place your used mask directly into the washing machine.
- Wash your mask with other items using a hot cycle, and then dry it thoroughly.
- If you can't wash your mask, throw it in the garbage right away.

Please share the following advice with your child.

c) When wearing a mask or face covering, please don't:

- Wear your mask below your nose.
- Remove or adjust your mask while wearing it.
- Wear a mask that doesn't cover your chin.
- Wear a mask that is too loose.

Please note that should your child's mask/face covering be damaged or soiled at school, we do have replacements that will be provided.

Thank you for helping to keep everyone safe!

## **COVID-19 MASK EXEMPTION FORM**

The Public Health Agency of Canada has stated that non-medical masks play a role in stopping the spread of COVID-19. They act as a barrier and reduce the chance of spreading infectious respiratory droplets to others and prevent infectious droplets from landing on surfaces from coughs or sneezes.

The Ontario Government has announced in its Guide to Reopening Ontario's Schools that non-medical or cloth masks will be mandatory indoors in school for students in Grades 4-12 when the 2020/2021 school year begins in September as one of the measures to be taken to protect the health and safety of students and staff. The health and safety measures that staff and students take while attending school will assist Sudbury Catholic District School Board to keep its schools open. Where a family is not able to provide a non-medical mask or cloth mask for their child(ren), the school board will provide one for them.

The school board does recognize however that, for medical or other reasons, it may not be possible for some students to wear a non-medical mask at school. If you wish to request an exemption for your child from the requirement to wear a mask, please complete and submit this form **to your school principal**.

Please be advised that, in some cases where students are not able to wear a non-medical mask, it may be necessary for the school to implement alternative measures to protect the health and safety of students and staff. The school will contact you to discuss alternative measures in the event that they are necessary.

**Student Name:** \_\_\_\_\_

**Home Address** \_\_\_\_\_

**School:** \_\_\_\_\_ **Grade:** \_\_\_\_\_

**Reason for Mask Exemption (check all that apply):**

Disability:

- ☐ Asthma
- ☐ Breathing difficulties caused by underlying health condition (e.g. severe allergies, heart or lung disease)
- ☐ Intellectual/developmental
- ☐ Sensory processing



**SUDBURY  
CATHOLIC  
DISTRICT  
SCHOOL BOARD**

☐ Hearing/communication

☐ Physical/Other cannot wear or remove mask without assistance

☐ Religion/Creed \_\_\_\_\_

☐ Other \_\_\_\_\_

**Parent/Guardian Contact Information:**

Name: \_\_\_\_\_

Telephone: \_\_\_\_\_

Email: \_\_\_\_\_

\_\_\_\_\_  
**Parent/Guardian Signature**

\_\_\_\_\_  
**Date**



## GUIDELINES FOR KINDERGARTEN 2020

The kindergarten program is a play-based inquiry learning environment. This should continue with changes to ensure health and safety protocols are adhered to. We are using three documents to guide our work as reference points. Please note: we are not required to follow childcare guidelines but we are using them as an excellent reference.

### References:

1. Before and After School Programs: Kindergarten – Grade 6  
<http://www.edu.gov.on.ca/childcare/before-and-after-school-programs-guide.pdf>
2. Operational Guidance During COVID-19 Outbreak: Child Care Re-Opening  
<http://www.edu.gov.on.ca/childcare/child-care-guide-child-care.pdf>
3. Guide to Re-Opening Ontario Schools  
<https://www.ontario.ca/page/guide-reopening-ontarios-schools>

### **Cleaning and Disinfecting for Boards and the Before and After School Programs (B&A)**

School boards are required to ensure that the classroom is cleaned and disinfected after the core day program ends and the before and after school program begins. Childcare providers may consider scheduling outdoor play during the time that the cleaning and disinfecting takes place.

Providers of the before and after school program will clean and disinfect the classroom in the morning before the core day of classes begins.

School staff need to accommodate in order to allow the B&A program to take place in the classrooms and must ensure to allow the childcare time and space to run the program and to clean and disinfect.

### **Guidance on the Use of Masks, Personal Protective Equipment and Handwashing**

All staff and providers are required to wear medical masks. Eye protection (e.g. face shield) is encouraged while inside, including hallways.

All kindergarten to grade 3 children are encouraged but not required to wear a mask while inside in the school, including hallways.

The use of masks is not required outdoors for adults or children if physical distancing of a least 2-metres can be maintained between individuals.

When wearing a medical mask, you should wash your hands before putting on the mask and before and after removing the mask. Refer to [Public Health Ontario resources](#) for how to properly wear and take off masks and eye protection.

Perform and promote frequent, proper hand hygiene (including supervising or assisting participants with hand hygiene). Hand washing using soap and water is recommended over alcohol-based hand rub for children. Refer to [Public Health Ontario's How to Wash Your Hands fact sheet](#).

### **Communication with Families**

Communication with families regarding the enhancement of health and safety measures facilitates transparency of expectations. Policies and procedures should be shared with families, for their information and to ensure they are aware of these expectations, including keeping children home when they are sick, which are aimed at helping to keep all children and staff/providers safe and healthy. We must share with parents, the policies and procedures regarding health and safety protocols to COVID-19, including requirements and exceptions related to masks.

### **Space Set-Up and Physical Distancing**

The ministry recognizes that physical distancing between students in a kindergarten program may be difficult and encourages staff and providers to maintain a welcoming and caring environment for children. Please see the document [Building On How Does Learning Happen?](#) for more support and ideas on how to provide an engaging environment while physically distancing.

Each group of students should have their own assigned indoor space.

As much distancing as possible between students, between students and staff and between staff members should always be promoted. Classroom sizes in Ontario schools vary in size, but schools are encouraged to remove unnecessary furniture and place desks/tables/chairs with as much distancing as possible, and to allow teachers as much teaching space as possible.

“The Guide to Re-opening Ontario’s Schools talks about maximizing distancing as much as possible. Full separation is not going to happen as you do not have a separate play station for each student and the children are going to want to play together. Therefore, Public Health Sudbury and Districts (PHSD) would suggest keeping the groups at any particular station as small as practical then moving the entire group to another station if possible – while ensuring appropriate hand hygiene and cough/sneeze etiquette and environmental cleaning between groups.” (Public Health Sudbury and Districts)

When in the same common space (e.g., entrances, hallways) physical distancing of at least 1-metre should be maintained between different groups and should be encouraged, where possible, between children within the same group by:

- spreading children out into different areas, particularly at meal and dressing time;
- incorporating more individual activities or activities that encourage more space between children; and
- using visual cues to promote physical distancing.

In shared outdoor space, a distance of at least 2-metres must be maintained between groups (cohorts) and any other individuals outside of the group at all times.

Personal protective equipment is not required during outdoor programming, unless physical distancing cannot be maintained.

Additional suggestions include:

- planning activities that do not involve shared objects or toys;
- when possible, moving activities outside to allow for more space; and
- avoiding singing activities indoors.

### **Equipment and Toy Usage and Restrictions**

Provide toys and equipment which are made of materials that can be cleaned and disinfected (e.g., avoid plush toys).

Provide designated toys and equipment (e.g., balls, loose equipment) for each group of students.

If sensory materials (e.g., playdough, water, sand etc) are offered, they should be provided for single use (i.e., available to the child for the duration of the day) and labelled with student's name, if applicable.

Students should be provided with a bag/bin of their own materials. (i.e., crayons, paintbrushes, scissors, glue, manipulatives, counters etc...)

Public Health Sudbury and Districts recommends, given the present situation, cleaning and disinfecting the toys regularly, and pull toys from use that are sneezed or coughed on or placed in the child's mouth.

### **Outdoor Play**

Schedule outdoor play and outdoor learning as much as possible.

The play structure in schools will be closed until further notice.

Schedule outdoor play by groups in order to facilitate physical distancing. Where the outdoor play area is large enough to accommodate multiple groups, groups must remain separated by at least 2 metres. Personal protective equipment is not required during outdoor programming, unless physical distancing cannot be maintained.

Designated toys and equipment (e.g. balls, loose equipment) for each group is encouraged. Where toys and equipment are shared, they should be cleaned and disinfected prior to being shared.

Students should bring their own sunscreen where possible and it should not be shared. Staff may help apply sunscreen to any child requiring it and should exercise proper hand hygiene when doing so (for example washing hands before and after application)

### **Food Provision**

- Change meal practices to ensure there is no self-serve or sharing of food at meal times.
- Utensils should be used to serve food.
- Meals should be in individual portions for the children.
- There should be no items shared (i.e., serving spoon or salt shaker).
- There should be no food provided by the family/outside of the regular meal provision of the program (except where required and special precautions for handling and serving the food must be put in place).
- Children should neither prepare nor provide food that will be shared with others.
- Ensure proper hand hygiene is practiced when staff are preparing food and for all individuals before and after eating.
- Where possible, children should practice physical distancing while eating.
- There should be no sharing of utensils.